



If it's outside,  
**WE'VE GOT IT COVERED.**



Protecting homes for over **60 YEARS**



# If it's outside, WE'VE GOT IT COVERED.

As a dedicated exterior specialist, Sandtex® has been protecting homes and buildings for decades. Our product portfolio benefits from extensive research and development with formulations that include our most durable weather-resistant technology, giving you the confidence that your home will be protected for years to come.

Protecting homes for over **60 YEARS**

**Rain resistant?**  
Yes.

**Sun resistant?**  
Yep.

**Dirt resistant?**  
You betcha.

**More rain resistant?**  
Well yeah, this is Britain.

Pure Brilliant White

Vermont Grey®

Plymouth Grey®

Brick Red

## Find your PRODUCT

Page

Microseal® Masonry Paint **4-7**



Rapid Dry Plus Wood & Metal Paint **8-9**



One Coat Exterior Wood & Metal Paint **9**



10 Year Exterior Wood & Metal Paint **10-11**



## Create your perfect COLOUR SCHEME

Sandtex  
**MY HOME IN COLOUR™**

Not sure what colour scheme is right for your property? Experiment with the Sandtex My Home In Colour™ tool.

Try different colours on your masonry, doors and windows. Visit [sandtexpaints.com](http://sandtexpaints.com)



## 5 ways TO PROTECT YOUR HOME



For more help on how to complete the perfect project visit [sandtexpaints.com](http://sandtexpaints.com)

<p><b>1</b></p>	<p><b>PREPARATION</b></p>	<p><b>SANDEX® STABILISING SOLUTION</b> Seals chalky, powdery or porous surfaces to provide a stable surface for paint. <b>SANDEX® FUNGICIDAL WASH</b> Eradicates and prevents mould &amp; algae growth.</p>
<p><b>2</b></p>	<p><b>REPAIRS</b></p>	<p><b>SANDEX® READY MIXED MASONRY FILLER</b> Repairs small cracks and holes.</p>
<p><b>3</b></p>	<p><b>EXTERIOR MASONRY</b></p>	<p><b>SANDEX® ULTRA SMOOTH and FINE TEXTURED MASONRY PAINT</b> Enhance and protect your exterior walls with Sandtex's unique Microseal® Technology.</p>
<p><b>4</b></p>	<p><b>EXTERIOR WOOD &amp; METAL</b></p>	<p><b>SANDEX® GLOSS and SATIN PAINTS and PRIMER UNDERCOATS</b> Provide ultimate endurance for all exterior wood and metal surfaces.</p>
<p><b>5</b></p>	<p><b>PROTECTION</b></p>	<p><b>SANDEX® BRICKWORK WATERPROOFER &amp; PROTECTOR</b> Protects your home from rain, ice and snow.</p>



**Somerset Pink**  
Smooth  
Masonry

**Black**  
Rapid Dry Plus  
High Gloss



**Morning Sky**  
Smooth  
Masonry



**Chalk Hill**  
Smooth  
Masonry

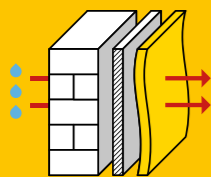
**Plymouth Grey®**  
Smooth  
Masonry

**Cloudy Day**  
Rapid Dry Plus  
Soft Satin

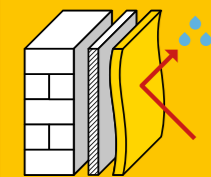
**MICROSEAL® TECHNOLOGY**

- BREATHABLE
- RESISTS PEELING AND FLAKING
- DIRT RESISTANT

WATER VAPOUR



WATER PROTECTION



Brick Render Paint

**Sandtex® Microseal®** formulation is microporous and provides sealing attributes that protect the coating against water ingress.

This means that the coating allows the surface to **breathe** and moisture to evaporate whilst at the same time protecting the coated surface from water penetration.

In addition, a slow release biocide **protects** the coating over an extended period against mould and algae growth.

Its dirt resistant properties also help to maintain the coating's aesthetic features, and with the benefit of being **rainproof in just 1 hour** you can complete the job even if the weather forecast is not reliable.

All these benefits of **Sandtex® Microseal® Masonry Paint** ensure that your house looks better for longer.



**15 YEARS** trusted durability on all exterior masonry paints.

Enhance, protect and improve your home with Sandtex® Microseal® Masonry Paints, for ultimate protection.



With over 60 years of knowledge and expertise, **YOU CAN RELY ON SANDTEX®** for complete home solutions.



**SMOOTH MICROSEAL® MASONRY PAINT**

- Breathable
- Resists peeling & flaking
- Dirt resistant
- 15 years trusted durability
- Smooth paint finish



**FINE TEXTURED MICROSEAL® MASONRY PAINT**

- Breathable
- Resists peeling & flaking
- Dirt resistant
- 15 years trusted durability
- Lightly textured paint finish – perfect for uneven walls with hairline cracks



**15 YEARS TRUSTED DURABILITY**

# If it's outside, WE'VE GOT IT COVERED.

A vast array of masonry colours available to choose from to help take your exterior to the next level.

Pure Brilliant White Smooth & Textured	Chalk Hill Smooth & Textured	Ivory Stone® Smooth & Textured
Cotton Belt Smooth	Cornish Cream Smooth & Textured	Oatmeal Smooth
Sandblast Smooth	Country Stone® Smooth	Light Cream Smooth
Sandstone Smooth & Textured	Mid Stone Smooth & Textured	Terracotta Smooth
Dark Stone Smooth	Bitter Chocolate Smooth	Brick Red Smooth

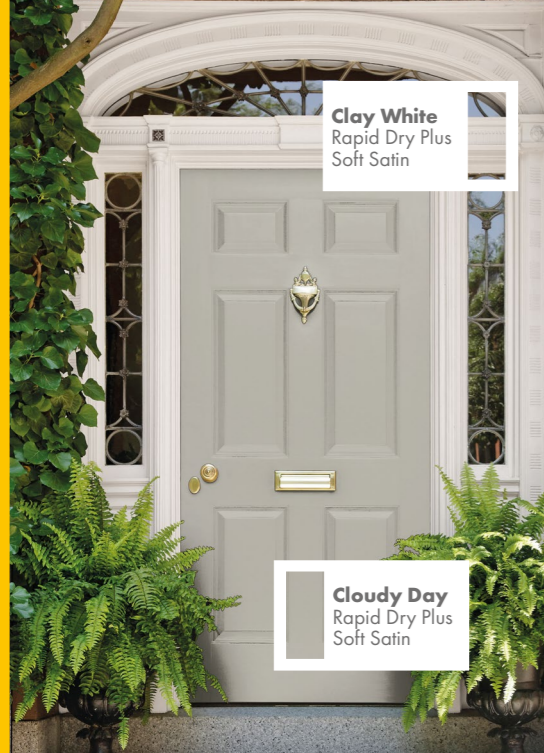
**Top  
TIP!**



Always sample your favourite colours first (ideally in an inconspicuous area) to ensure the shade is right for you before embarking on decorating a larger area. All Sandtex® Microseal® Masonry Paints, apart from Pure Brilliant White, are available in a 150ml sample pot.

Magnolia Smooth & Textured	Gravel Smooth	Light Grey Smooth
Somerset Pink Smooth	French Grey® Smooth	Plymouth Grey® Smooth & Textured
Morning Sky Smooth	Olive Smooth	Vermont Grey® Smooth
		Slate Grey Smooth
		Black Smooth

We make every effort to ensure perfect colour reproduction, but due to print limitations, the colours shown in this card may not match exactly. If you are using more than one can of paint in the same area, mix them together in a large container to ensure consistency of colour.



**Clay White**  
Rapid Dry Plus  
Soft Satin

**Cloudy Day**  
Rapid Dry Plus  
Soft Satin



**Gentle Blue**  
Rapid Dry Plus  
Soft Satin



**Oxford Blue**  
Rapid Dry Plus  
High Gloss



**Pure Brilliant White**  
Smooth  
Masonry

**Black**  
Rapid Dry Plus  
High Gloss



**Pure Brilliant White**  
One Coat  
Gloss

**RAPID DRY PLUS - ADVANCED WATER BASED TECHNOLOGY FOR ALL EXTERIOR WOOD AND METAL.**

Featuring the durable properties of a traditional solvent based product in a fast drying water based formulation.

**SANDEX® ONE COAT EXTERIOR GLOSS & SATIN\***

Easy one coat coverage and drip resistant formulation.



**RAPID DRY PLUS PRIMER UNDERCOAT**

Use with Rapid Dry Plus High Gloss or Soft Satin to provide a tough basecoat for your exterior wood and metal.

Available in White and Charcoal Grey. For colours marked with \* use White. For all other colours, use Charcoal Grey.



**RAPID DRY PLUS SOFT SATIN**

- Excellent flow for easy application
- Touch dry in 2 hours
- Tough and durable
- Soft low shine finish



**RAPID DRY PLUS HIGH GLOSS**

- Excellent flow for easy application
- Touch dry in 2 hours
- Tough and durable
- Ultra high shine finish



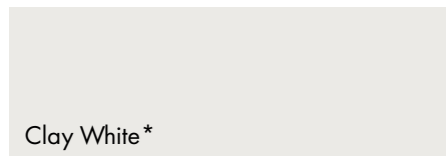
Pure Brilliant White\*



Bay Tree®\*



Cloudy Day\*



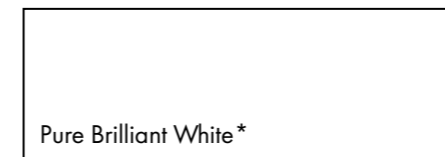
Clay White\*



Gentle Blue\*



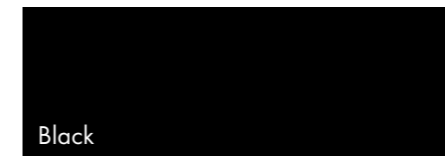
Seclusion®



Pure Brilliant White\*



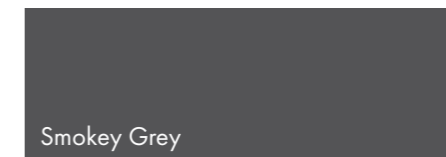
Oxford Blue



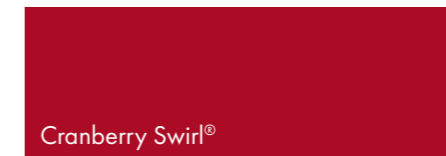
Black



Bay Tree®\*



Smokey Grey



Cranberry Swirl®



\*Gloss available in Pure Brilliant White & Black, Satin available in Pure Brilliant White only.



**Fern Canopy**  
10 Year  
Exterior Satin

**Soothing Green**  
10 Year  
Exterior Satin

**Seclusion®**  
10 Year  
Exterior Satin

**Cloudy Day**  
10 Year  
Exterior Satin

**Pure Brilliant White**  
10 Year  
Exterior Satin

**Pillar Box Red**  
10 Year  
Exterior Gloss

**Oxford Blue**  
10 Year  
Exterior Gloss

ADVANCED TECHNOLOGY TRIM PAINTS PROVIDE ULTIMATE ENDURANCE FOR ALL EXTERIOR WOOD AND METAL.



**10 YEARS** protection on exterior wood and metal.

Use **SANDEX® 10 YEAR EXTERIOR GLOSS** or **SATIN** to complement your choice of wall colour.



**SANDEX® 10 YEAR PRIMER UNDERCOAT**

Use with 10 Year Exterior Gloss or Satin to provide a tough basecoat for your exterior wood and metal.

Available in White and Dark Grey. For colours marked with \* use White. For all other colours, use Dark Grey.



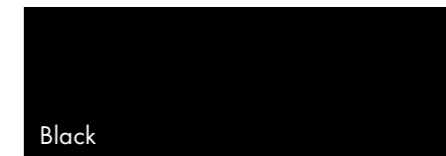
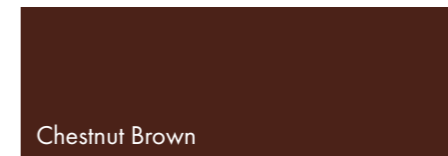
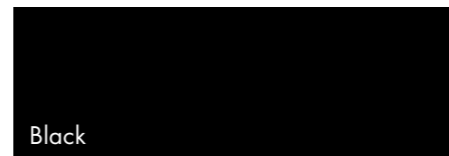
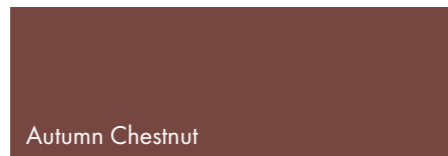
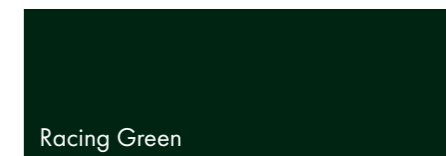
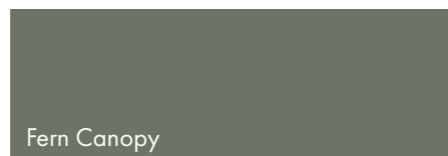
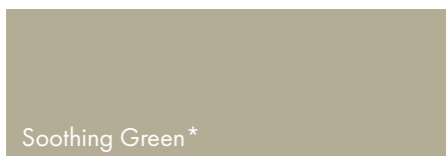
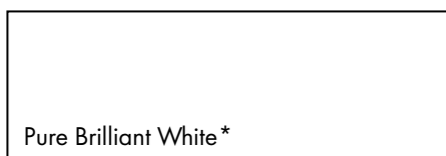
**10 YEAR EXTERIOR SATIN**

- Flexible formulation to resist cracking and flaking
- Tough and durable
- Soft low shine finish
- 10 years protection



**10 YEAR EXTERIOR GLOSS**

- Flexible formulation to resist cracking and flaking
- Tough and durable
- Ultra high shine finish
- 10 years protection





[sandtexpaints.com](http://sandtexpaints.com)

☎ 0330 024 0303

📷 [sandtexpaintsuk](https://www.instagram.com/sandtexpaintsuk)

📘 [sandtexUK](https://www.facebook.com/sandtexUK)

---

We know what a positive difference we can make to people and our planet.

We have signed up to a broad variety of commitments to help our colleagues, our communities and the world around us to achieve more, make a difference and truly open up what's possible.

To do this, our projects focus on:

- Sustainability
- Charity
- Community
- Education
- People & Culture

For more information please visit [crownpaints.co.uk](http://crownpaints.co.uk)

---

**CROWN**  
It's not just paint,  
it's personal.



Sandtex, the Sandtex logo, Microseal® and the colour names marked with ™ or ® are all trade marks of Crown Brands Limited.

Crown Paints Limited, PO Box 37, Hollins Road, Darwen, Lancashire. BB3 0BG, Telephone 01254 704951

Crown Paints Ireland Ltd, Unit 8A, Coolmine Central, Porters Road, Coolmine Industrial Estate, Dublin, D15 AX9A, Telephone: 00353 1 816 4400

© Crown Paints Limited 2023

A part of HEMPEL



**WORLD  
LAND  
TRUST™**

[www.carbonbalancedpaper.com](http://www.carbonbalancedpaper.com)  
CBP016882



6062993